

## Logging in the Apex Recreation Area

**APOA AGM Presentation  
March 9, 2013**

**APOA Forestry Committee  
Jeff Brown  
Denis O’Gorman  
Barry Leigh**

©2013 APOA. Public distribution permitted



## Presentation Agenda

---

**How we got here**

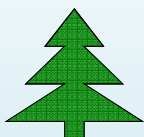
**Local Stakeholder Concerns**

**Additional Logging planned**

**Recommended Actions**



## How we got here



## An Industry Under Pressure

### **Mountain Pine Beetle**

- Unprecedented impact on BC forests
- Creates "harvest now" mentality
- Radically changed the forest industry

### **Thinly staffed Forestry Ministry**

- Not staffed to be highly proactive locally
- Complaint driven

### **Changing Regulation**

- BC Timber Sales
- First Nation Licenses

## Regulatory Environment

### Complex regulation

- Provincial Gov't: Forest Practices Act
- License holder: Forest Stewardship Plan
- Local: cut-block license to cut

### Multiple, volume-based license holders

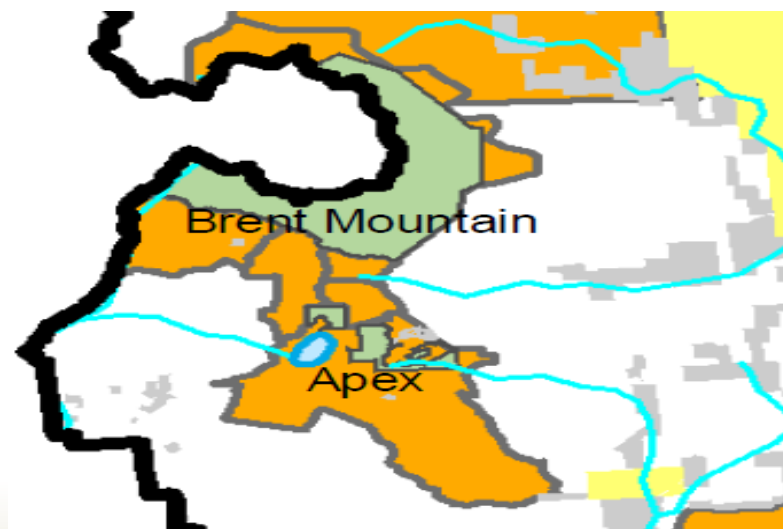
- Complex, geographically overlapping licenses
- Weyerhaeuser
- Gorman Bros.
- Sn'pink'tn Forestry
- BC Timber Sales

### Land and Resource Management Plan (LRMP)

- Defines "Apex Intensive Recreation Area"
- Quasi-legal status: 2001 document, 2006 "Ministry order"
- Specifies treatment of *non-park* recreation areas

## Apex Intensive Recreation Area

6



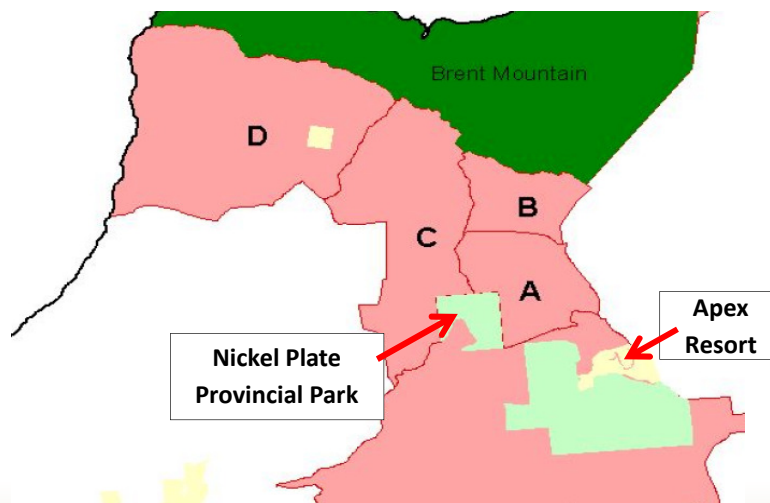
## Apex Region Tourism Zones

7



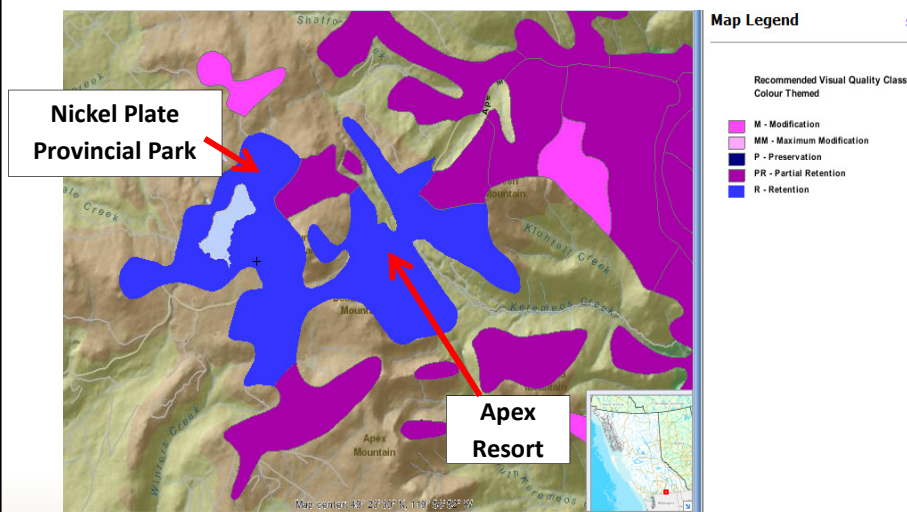
## Restricted Harvest "Polygons"

8



## Logging Visual Impact Guidelines

9



## Sn'pink'tn Forestry

### Apex area was traditionally "no go"

- Logging blocked by PIB

### PIB now has a 68,000 m<sup>3</sup> harvest license

- Approximately 1700 logging trucks
- Signed Gorman FSP in 2010
- Created Sn'pink'tn Forestry LP

### Now actively logging

- Keremeos Creek Valley, Green Mt., Dividend Mt.
- Shatford Creek Valley

### First meeting with APOA

- Feb 28, 2013

## Local Stakeholder Concerns

©2013 APOA. Public distribution permitted



## Systemic Disempowerment

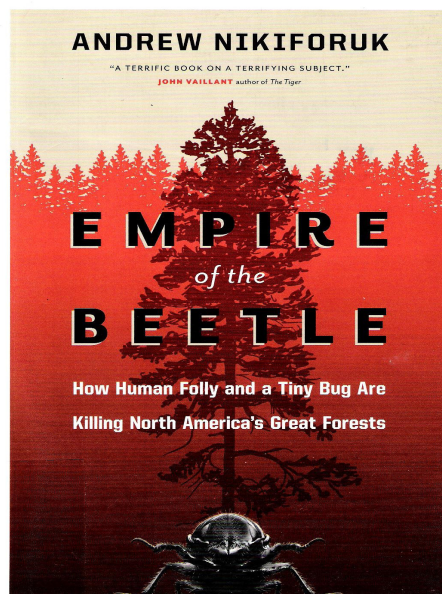
---

- No *effective* local gov't representation**
- Poorly defined "recreation area" status**
- Complex issues**
- Incomplete or non-existent consultation**
- No cross-industry view**
- No discernable long-range plan**
  - "Log everything" seems to be the plan
- "Pine beetle" ... the universal explanation**



## An Issue Worthy of a Book

13



## Industry - Recreation Disconnect

### What we've heard so far:

- We tried to contact you ... it's not our fault
- It's pine beetle salvage – we have to harvest now
- It's fuel load reduction – we have to harvest now
- It's political – there's nothing we can do
- It's political – you better not do anything
- The LRMP is ...
  - Just a guideline
  - Only the 2006 "Legal Order to Create Resource Management Zones" is binding
  - Invalid because we didn't participate in its creation

## Industry - Recreation Disconnect

---

**And the biggest disconnect of all...**

***"We've met the visual guidelines  
for a recreation area"***

## Before – Green Mountain

---

16





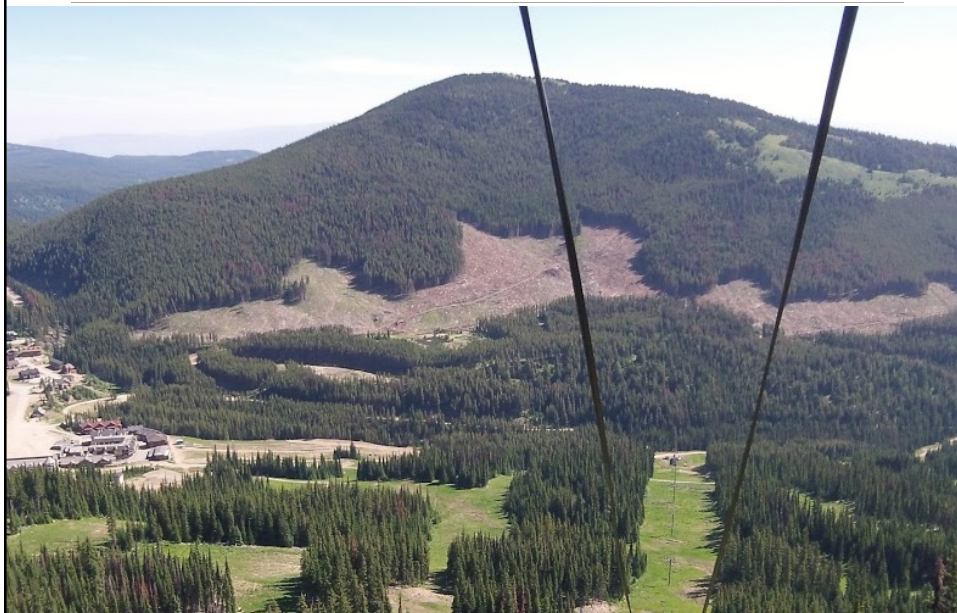
## After – Green Mountain

17



## After – Green Mountain

18



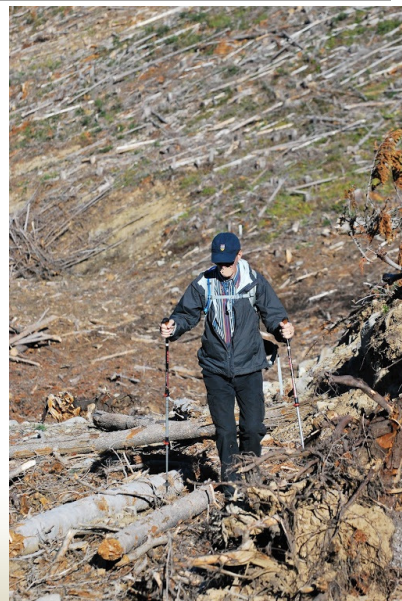
## After – Green Mountain clear cut

19



## After – Green Mountain clear cut

20





After – Green Mountain clear cut

21



After – Green Mountain clear cut

22





## After – Green Mountain Burn Pile

23



## After – Dividend Mountain

24



## After – Dividend Mountain

25



And More Logging is Planned

©2013 APOA. Public distribution permitted





## Gorman / Sn'pink'tn / APOA Meeting

**Met two weeks ago**

**Basic message was...**

- **It is too late**
- **Our plans are set**
- **You can't change them (much)**
- **Don't try**

**52 acres more to be logged on Green Mt.**

- Clear cut to increase 50% this summer

**Current licenses expire 2015**

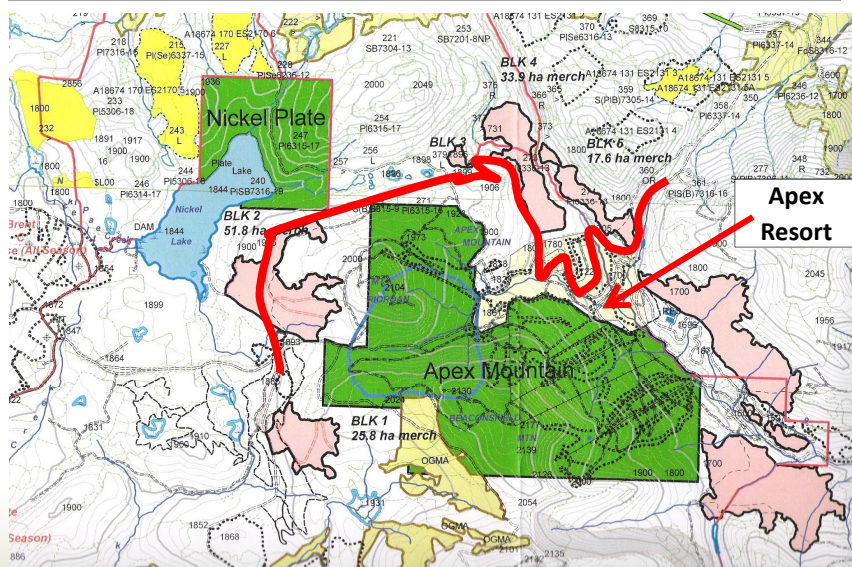
**More licenses to come (they hope)**

**Planning to log additional 332 acres in 2014**



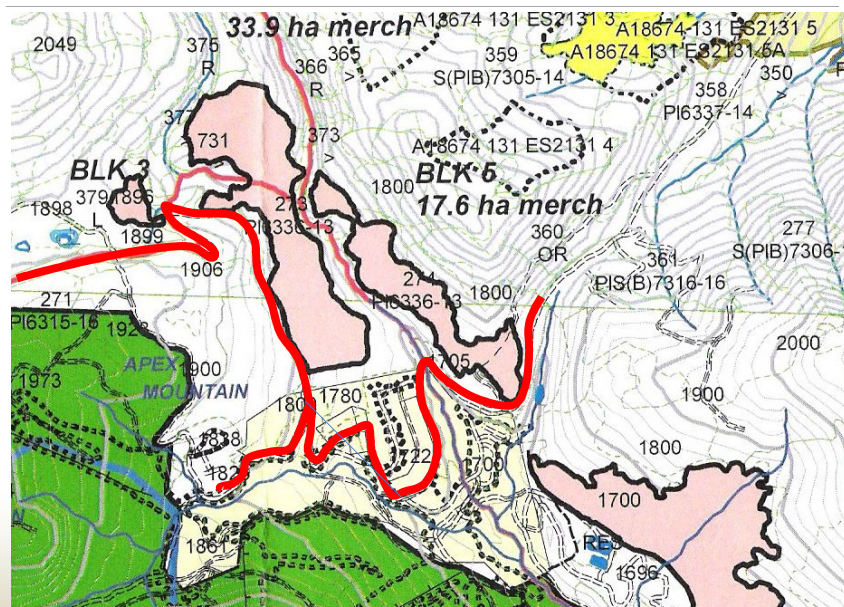
## Gorman/Sn'pink'tn Harvest Plan

28



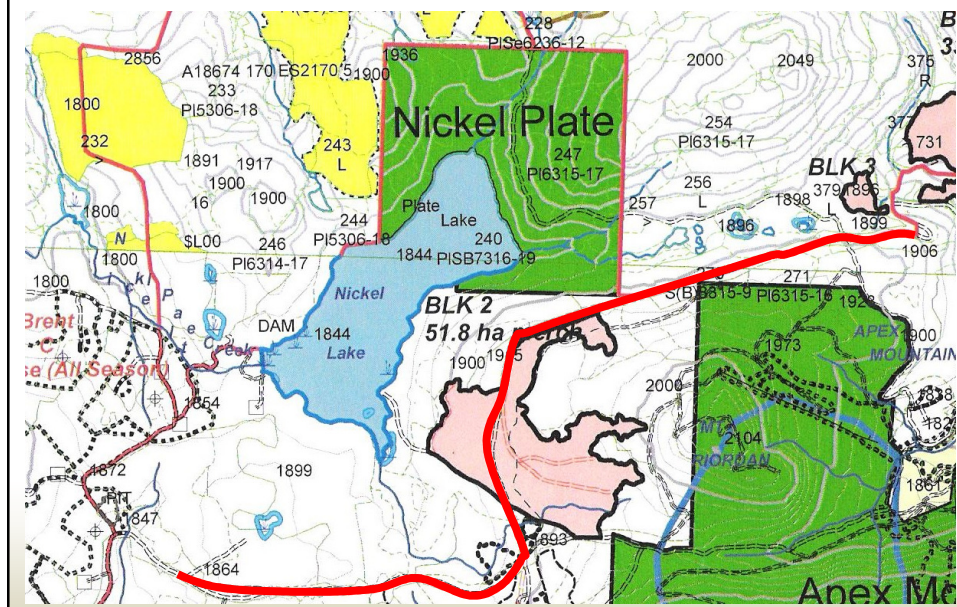
## Upper Keremeos Creek – 140 acres

29



## Riordan/Nickel Plate – 128 acres

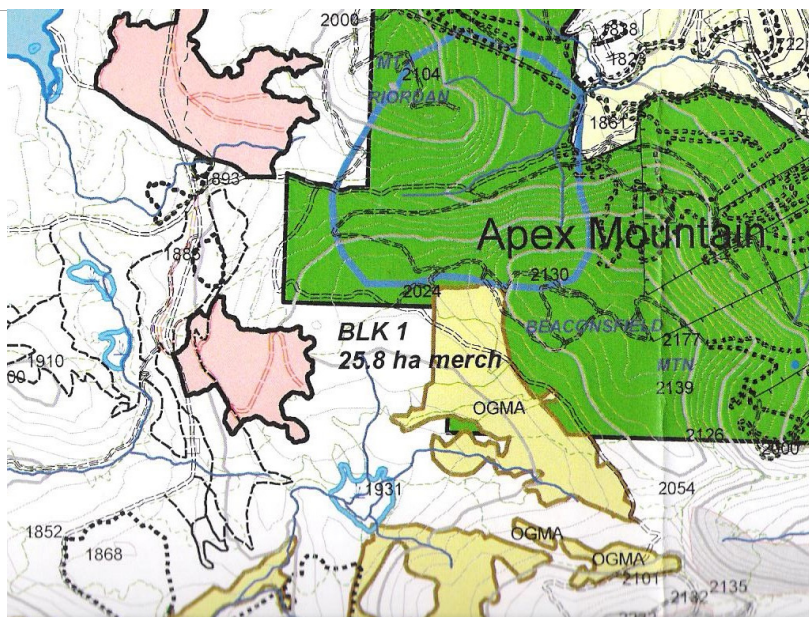
30





## Beaconsfield – 64 acres

31



## APOA Proposal: Community Forest

### Often Involve First Nations

### Economic goals supplemented with:

- Community goals
- Jobs, environment, recreation goals
- Typically “gentler logging”
- Long-range planning

### e.g. Whistler Community Forest

### No interest from Sn'pink'tn

- It will have to be a PIB council decision



## Committee Recommendations

©2013 APOA. Public distribution permitted



### For the Forest Industry

---

#### **Suspend Apex logging**

Until stakeholder concerns are addressed

#### **Coordinate stakeholder consultation**

- Develop long-range plans
- Tourism and Recreation are primary

#### **Support community forest feasibility study**



## The Provincial Government

---

### **Suspend license to harvest Green Mountain**

#### **No new licenses to cut**

- Until stakeholder concerns addressed
- Until visual and recreation impact addressed

### **Require Gorman & Sn'pink'tn to resubmit FSP**

- For Apex Intensive Recreation Area

### **Appoint arm's length forester to oversee Apex Recreation Area**



## RDOS

---

### **Assert RDOS's stakeholder status**

- protect property owner interests

### **Assert recreation value of Apex area**

- Promote Regional Trails Initiative

### **Support community forest feasibility study**

### **Initiate environmental impact study**

- Especially on Keremeos Creek watershed

### **Consult with local citizens**

- help amplify our voice



## APOA

---

**Confirm support for committee recommendations for industry & gov't**

**Confirm support for contacting Forest Practices Board**

**Confirm support for launching feasibility study for Apex Community Forest**

**Confirm support for using contingency fund**

- Only when/if needed



Thank you

**Forestry Committee report at:**  
**[www.apexpropertyowners.com](http://www.apexpropertyowners.com)**

**Presentation and Report Questions:**  
**[jeff@brownjj.com](mailto:jeff@brownjj.com)**



## Forestry Motion (preamble)

### Given:

- **APOA has recently become aware of new forest harvesting plans in the Apex area,**
- **these are in designated *Intensive Recreation* and *Tourism* zones which require harvesting to be compatible with recreation and tourism values, and**
- **the required stakeholder consultation by the forest licensees is incomplete and thus does not meet the intent of the approved Land and Resource Management Plan (LRMP).**



## Forestry Motion (as passed at the AGM)

### It is moved that:

**the APOA membership supports the APOA in pursuing, for the Apex Intensive Recreation Area:**

- reaffirmation and updating of the LRMP's forest harvesting guidelines;
- ensuring stakeholder consultation on harvesting plans occurs in a coordinated way, respects LRMP intent, and considers updated information on recreation and tourism values before additional harvesting occurs;
- suspension of further harvesting until this consultation has occurred;
- requesting Ministry and/or Forest Practices Board monitoring for compliance with LRMP intent;
- exploring with pertinent parties, potential forest management alternatives such as a Community Forest Agreement; and
- using the APOA contingency reserve to assist in this forestry endeavor as appropriate

